

Bringing data and processes together across the value chain



Connect data, processes, and people for a more collaborative, efficient, and productive approach to product design, development, and delivery



 **AUTODESK**

Manufacturing is evolving in many ways, with operations transformed by the cloud and a range of emerging technologies.

Future-ready organizations know that removing data silos and introducing digital solutions is paramount. Not only to streamline product lifecycle processes but to enable increased levels of stakeholder collaboration to drive better decision-making, improve quality, and accelerate time to market.



Many manufacturers, however, still need to bring together disconnected and manual product lifecycle workflow processes and disjointed product data which all impact efficiency, agility, and the ability to innovate.

To respond, they need flexible data and process management capabilities that digitally transform product development and collaboration across teams, suppliers, and geographies.

An end-to-end approach for connected product development

As manufacturers move from concept to delivery, multiple CAD systems bring confusion, data loss, and delays. Autodesk Product Lifecycle Management (PLM) provides multi-CAD integrations that work with the tools you already know, so teams can collaborate efficiently across your organization and with suppliers.

Autodesk PLM manages data and processes throughout the entire product lifecycle. By centralizing and automating process workflows, PLM breaks down operational silos to enable cross-functional collaboration for all stakeholders.

This creates a 'connected digital thread' across design, development, and delivery that can extend into broader sales, supply chain, and partner ecosystems.



More connected data, processes, and communication allows for higher levels of product adaptation, variance, and customization. It also enables automation of time-consuming and non-value-adding processes and workflow.





Keep everyone working from a central source of data

Autodesk PLM helps you reconfigure your supply and value chain to mitigate disruptions from internal and external factors. Bringing data and processes together improves visibility and accountability across

all projects, so you can see specific areas of the product lifecycle and how different departments are contributing.



Streamline processes

Speed up development through centralized, CAD-integrated product data management (PDM) and workflow automation to spend more time on high-value tasks.



Connect the supply chain

Improve supply chain visibility, collaboration and response time.



Get to market faster

Adapt to a changing market in real time, from concept to production, with greater innovation, fewer iteration cycles, and lower costs.

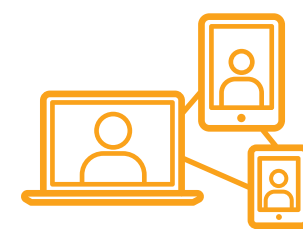


Drive dynamic decisions

Vastly improve collaboration and decision-making, and track costs and materials with real-time, system-wide data sharing.

What makes Autodesk the ideal partner for manufacturers?

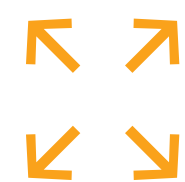
Autodesk PLM's unique ability to establish a connected foundation across design, development, and delivery in a repeatable, flexible way, makes your people more efficient, data-enabled, and collaborative across every process.



Our open approach to technology enables more ecosystem- and partnership-based engagements

Open APIs and integrations across technology enables data and the product development process to talk across the organization.

Autodesk PLM also enables you to integrate data from others, creating more cohesive engagements with business partners, ecosystem collaborations, and with Autodesk.



Our solutions can easily scale as your needs change and business evolves. Our subscription-based approach means you can roll out new work spaces as and when you need to

Our 'evergreen' solution continually evolves, meaning there's no need for upgrades either.



We remove the technological barriers to entry so you can use our solution across the business

With silos broken down and data flowing together, our connected and open solution can be used across the business—not just within IT.

A more democratized approach to deploying product development use cases helps make them more relevant to business requirements, adaptive to outcomes, and faster to get working.

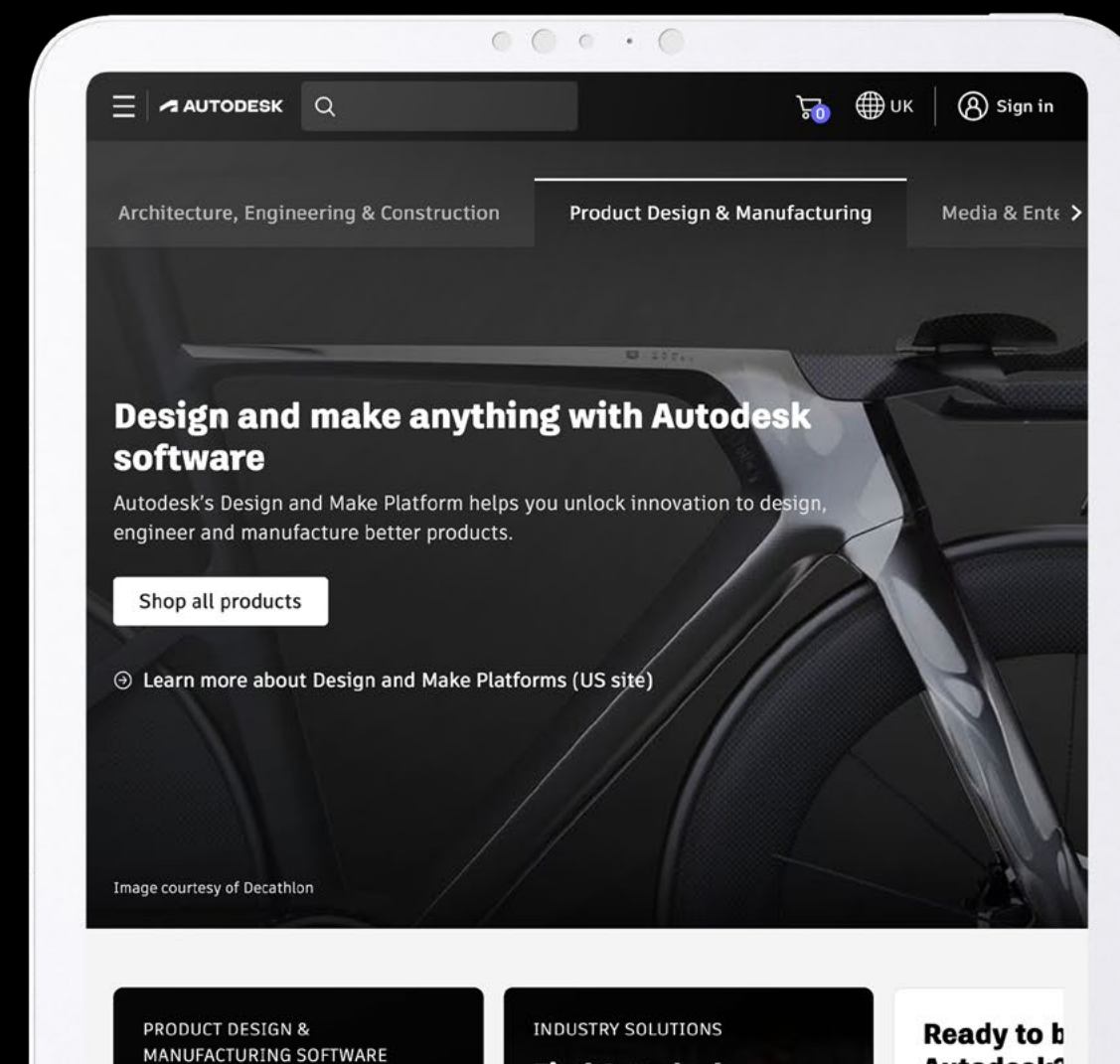


Transform and manage the complete product lifecycle

Autodesk PLM enables a more integrated and flexible approach across products and data management, empowering your people with the digital tools to work more efficiently. This saves time, reduces costs, improves quality, and gets products to market faster.

As a partner, Autodesk can help you increase cohesion and collaboration across global teams with a central source of data. And develop an agile and adaptive approach to processes across the value chain, from customization through to operations and service.

[Discover more here](#)





www.autodesk.com

Autodesk and the Autodesk logo are registered trademarks or trademarks of Autodesk, Inc., and/or its subsidiaries and/or affiliates in the USA and/or other countries. All other brand names, product names, or trademarks belong to their respective holders. Autodesk reserves the right to alter product and services offerings, and specifications and pricing at any time without notice, and is not responsible for typographical or graphical errors that may appear in this document.

© 2023 Autodesk. All rights reserved.